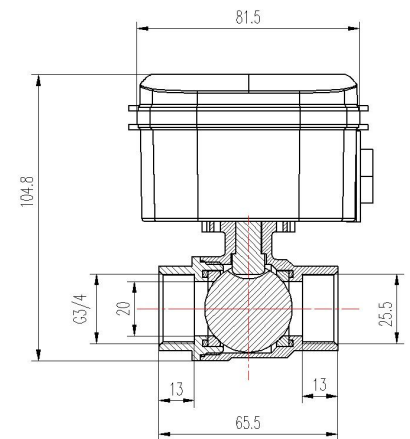
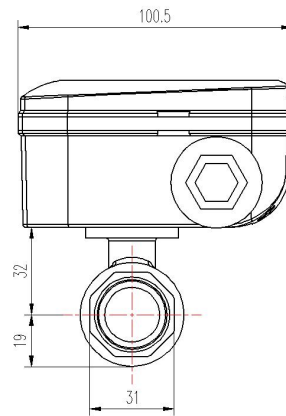


FH-L series Lorawan electric ball valve



ACTUATOR VALVE PARAMETERS

Valve size (BRASS/SS304)	DN15	DN20	DN25	Valve features	Low power electric valve/anti-corrosion/anti-scale/anti-block
Nominal flow	1.5m³/h	2.5m³/h	3.5m³/h	Work voltage	2.8V-3.6V (Li battery)
Protection degree			IP65	Work current	≤160mA
Working pressure			1.6MPa	Max torque	3.5N.m
Working medium temperature			-20 ° C ~ 70 ° C	Open/closed time	16Sec
relative humidity, no condensation			10%~90%	Receive sensitivity	<-136dBm
Receive current			<15mA	Communication distance	Urban area: 1km-5km
Transmit current			<130mA		Rural area: 5km-15km
Working frequency				433-510MHz ISM Band / 863-928MHz ISM Band etc	

COLLECTOR PARAMETERS



Working voltage	AC220V/110V
Power	5W
Uplink interface	4G/5G / RS485;
Downlink interface	433-510MHz / 863-928MHz
Sensitivity	142.5dBm.
Communication distance	City: 1km-5km / Wilderness 5km-15km
Status indication	power supply, transceiver status, connection status, signal;
Working temperature	-40 ° C ~ 80 ° C;
Working humidity	5%~95% relative humidity, no condensation.

FH-L series Lorawan electric ball valve

